

EAGLES EDITION



Principal's Message

Hello Eagle Families,

We had a great turn out with our parent teacher conferences. We appreciate all of our parents' continued collaboration and communication regarding their student(s)' academics. I would like to thank our teachers for providing extended time this week in order to support all of our students. We had great feedback from teachers and parents alike.

- If you would like to acknowledge your student(s)' teachers, please click the link below to submit a teacher of the month nomination form. They have a chance to win a prize.

[Teacher of The Month](#)

Here are a few reminders:

- There is no school Monday, September 2, 2024 - Labor Day
- [Senior Fee](#) is due Friday, September 13, 2024
- Eagle Expo is Tuesday, September 17, 2024 please check out the flier in this newsletter for more information.
- Jostens Senior Meeting is Friday, September 20, 2024 at 8am. Parents are invited. You will learn more about ordering graduation announcements, cap and gown, etc.
- Please take a moment to review the dress code with your student(s) as we continue to experience hot weather for the next several weeks. Tube tops, spaghetti straps, and half shirts are not acceptable for school.
- Our Fall Festival is coming up in October and we are looking for parents volunteers to be Class Basket Coordinators. For more information please read the PTO section of this newsletter.

Have a great weekend Eagles!

Warm Regards,

Dr. Jennifer L.H. Murphy



QUICK REFERENCES

Page Jumps

New Feature:
Click the topic you want and jump straight to that page

[Calendar](#)

[Athletic Department](#)

[PTO News](#)

NEW

[Fall Talent Show](#)

NEW

[Fall Festival](#)

[Fundraiser Opportunities](#)

[Eagle Expo](#)

NEW

[Counselor Connection](#)

[University Events](#)

[Senior Page](#)

[L.I.F.E Fund](#)

**DUE
SOON!**

[Health Office Notices](#)

[Job Opportunities](#)

Helpful Links

[Gilbert's Parents
Resource Page](#)



[7th-12th
School Calendar](#)

[7th-12th
Events Calendar](#)



UPDATED!

[Friday A/B
Schedule](#)

[7th-12th
Bell Schedule](#)

[Website](#)

[Facebook](#)

[PTN
Website](#)

[PTN
Facebook](#)

CALENDAR

This Month

SEPTEMBER

2nd: No School

Labor Day Holiday



5th: Board Meeting

QC Campus at 9am

17th: Eagle Expo

5-6:30 pm in the B4 gym

20th: Jostens Senior Meeting

At 8am in B3 Theater

27th: Last Day of Quarter

9/30-10/14: Fall Break

Next Month

OCTOBER

9/30 - 10/14 No School

Fall Break

15th: First Day of Quarter 2

[Back to Main Menu](#)

ATHLETIC DEPARTMENT

Proud Sponsor of
Eduprize athletics



SPORTS INFORMATION 9/3 - 9/6

Athletic forms for the 24-25 school year can be found [HERE](#):
Students need a sports physical and other documents turned in PRIOR to trying out.

[24-25 Athletic Physical:](#)

All game schedules can be found on [AZCAAPREPS.com](#)

****Athletic Payments need to be made on Infinite Campus by Monday
or Athletes playing time will be affected** .**

JV Volleyball Schedule

Tuesday: Practice 3:00 - 5:30

in Room 53 to watch the game film

Wednesday: Practice 3:00 - 5:30 - B4 Gym

Thursday: Practice 3:00 - 5:30 - B4 Gym

Junior High A Schedule

Tuesday: HOME Game Vs Champion

At 4:30 PM - B4 Gym

Thursday: Practice 3:15- 5:30 - B4 Gym

Junior High B Schedule

Tuesday: HOME Game VS Ben Franklin

At 5:30 PM - B4 Gym

Wednesday: HOME Game VS Wells Middle

School

At 5:30 PM - B4 Gym

Elementary Volleyball Schedule

Wednesday: Practice 3:15-5:15 - B3 Gym

**** Sports pictures will be on Friday
9/6 starting at 12:45 in B4 gym****

Varsity Boys Flag Football Schedule

Tuesday: HOME Game VS PS Academy

At 4:00 PM & 5:00 PM on field

Wednesday: Practice 3:15 - 4:30 on Field

Thursday: HOME Games VS EVAC

At 4:00 PM & 5:00 PM on field

COED JH Soccer Schedule

Monday: HOME Game VS EVAC

At Eagle Sports Complex

(828 E Broadway Rd) @ 4:30 PM

Wednesday: Practice 3:15 - 4:30 on field

JH Cheer Practice

Tuesday & Thursday 3:00 - 5:00 - B3 Gym

Be sure to bring water to your practices!
Questions, please email the Athletic Director
Clint.ambos@eduprizeschools.net

[Back to Main Menu](#)



INTERNAL ASSESSMENT CALENDAR AND THE MAY 2025 EXAMINATION SCHEDULE

The 2024-2025 Internal assessment calendar is official. If your student is testing this year, please be mindful of these dates. You can find this document along with the May 2025 Examination Schedule on the MyIB Google Classroom. If you aren't logged into this classroom, the code isnigb777.

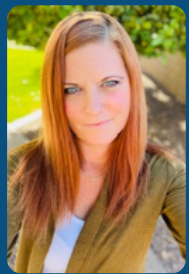
IB MISSION STATEMENT

The International Baccalaureate Program aims to develop inquiring, knowledgeable, and caring young people who help to create a better and more peaceful world through intercultural understanding and respect. The organization works with schools, governments and international organizations to develop challenging programs of international education and rigorous assessment. Our program focuses on the development of the whole child as an inquirer and is defined by six transdisciplinary themes of global significance.

REGISTRATION

Registration for all IB exams will be in September, so be sure to ask exam-related questions before then. I'll be talking with the IB students to make sure they are on track with their goals, so if you aren't sure if you want to test or in what subject, please email me. Each exam is 119 and you will pay through Infinite Campus—more to come on that.

Have a good weekend,
amy.smith@eduprizeschools.net
Amy Smith



Amy Smith
IB Director

PTO NEWSLETTER

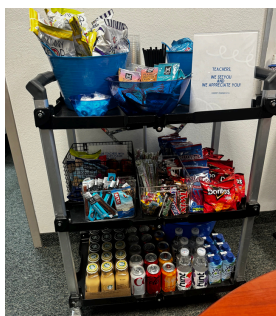
AUGUST 2024



PTO NEWS

Last weekend for the Robeks fundraiser. Ends September 2nd! We appreciate all of your support and help spreading the word!

ATL Wings Fundraiser all day Sept 8th!
It's the first NFL Sunday of the regular season! *see flyer



Thank you to the volunteers who helped PTO deliver snacks to all of our amazing teachers! Teachers, we appreciate your extra hard work during conference week! Thank you for all that you do and thank you teacher helpers!

The PTO would also like to say a special thank you to admin for making the new boards transition so easy! We appreciate all that you do and supporting us!

PTO Calendar

[Click here to see volunteer opportunities and view the PTO calendar.](#)

TEACHER & STAFF FAVORITES

[Click here to see the list!](#)
[Can be used for bdays, holidays or appreciation](#)



UPCOMING

-Scholastic Book Club Flyers K-6 due by September 6th

-Student of the month and reward drawings will be created and sent out to teachers soon!



-ATL Wings Fundraiser 9/8, First NFL Sunday of the regular season! *see flyer

-Fall fest talent show auditions September 16th-18th *see flyer

-Eagle Expo grades 7-12, September 17th, stop by the PTO table for a treat/prize once you've finished the expo! The grade with most student attendance will win a popsicle day! (JH + HS separate)

-Parkour Academy Fun + Fundraiser Event Friday, Sept 27th \$2 off for Eduprize families *see flyer



FALL FESTIVAL

When: Friday, October 25th 5-9pm

Where: Eduprize Gilbert, B3 gate entrance

Pre-K-12th, lots of activities, food and more!

Basketball Boosters Haunted House, Food Trucks, Spider Man + Elsa, Bounce Houses, [Talent Show](#), Basket Raffle, Pumpkin Carving Contest, Fall themed Games, Corn Hole, Vendor Shopping, Fall Photo Booths

Click [HERE](#) to help or volunteer at the festival! We need you!

Class Basket Coordinators Needed! Click [here](#) for Flyer!



Don't have the time to volunteer or attend a fundraiser but want to make a monetary donation?

[Click Here](#)

We appreciate you!

Links to follow the PTO
[Facebook](#) [Website](#)
[PTO Facebook Group](#)



Gilbert Eduprize PTO



**FALL FEST
TALENT SHOW
AUDITIONS**

SEPT 16TH, 17TH & 18TH

B1 Media Center • 3:00-4:00pm

Open to K-12 students • Must sign up to audition
See details + sign up [HERE](#)

Email pto@eduprizeschools.net with any questions!

[Back to Main Menu](#)



FALL FESTIVAL

Basket Raffle

Fall Fest is October 25th, 5-9pm



Class Basket Coordinators Needed!

Coordinators do not volunteer during the festival.



WHAT COORDINATORS DO:



- Come up with a basket theme (games, movie night or bigger)!
- Set up an email to all parents in class, let them know about basket and kindly ask for donations. A sign up genius can be made for physical items or you can ask for monetary donations. The raffle is an annual tradition.
- Ask if parents have a business that can donate (tax deductible) or if they know businesses who can donate items or make a monetary donation
- Check in with local businesses yourself. Get creative and look up ideas online!
- Keep in touch with the PTO for tax donation forms if needed
- and let us know what your class basket theme will be. We are here to help!
- Classes that have a basket are entered to win a pizza party with a movie or games!
- Receive free raffle tickets just for being a basket coordinator!

BASKET TRAINING AVAILABLE • PTO CAN ANSWER ANY QUESTIONS

LET YOUR TEACHER KNOW RIGHT AWAY IF YOU ARE WILLING TO HELP YOUR CLASS!



EMAIL: PTO@EDUPRIZESCHOOLS.NET

[Back to Main Menu](#)

PTO September Fundraisers

SMOOTHIES FOR A GOOD CAUSE.



Join Robeks in supporting **Eduprize Schools**

25% of sales all day 8/19 - 9/2 will be donated to Gilbert Eduprize PTO.

Bring in this flyer, show it on your phone or tell the cashier you're supporting the cause.



1240 E. Baseline Road (Next to Crumbl)
480-306-6439



Offer valid only on the date(s) and at the Robeks location identified on this flyer. Tax, gift cards and retail sales are excluded from the donation. Offer valid for in-store orders only. Not valid for online orders. Offer void if the flyer is distributed in or near the restaurant. ©2022 Robeks Corporation.

FIRST NFL SUNDAY OF THE SEASON

ATL WINGS FUNDRAISER



MENTION EDUPRIZE BEFORE PAYING 25% BACK TO PTO

SEPT 8TH ALL DAY
70 W. Warner Rd, Chandler



Find a fundraiser that may work for your family! We appreciate your support!



PARKOUR ACADEMY

FRIDAY SEPTEMBER 27TH

12-3PM K-6 OR 6-9PM ALL/7TH + UP
1830 E. BASELINE RD MESA 85204

\$2 OFF TICKETS FOR EDUPRIZE FAMILIES - 40% DONATED BACK

GO FOR THE GOLD



AND JOIN US FOR



Eagle Expo

TUESDAY, SEPTEMBER 17TH

5:00-6:30 PM

BUILDING 4 GYM



FOOD TRUCKS!

FUN!

VIEW AMAZING
PROJECTS!

EARN A GOLD MEDAL BY
COLLECTING STAMPS!

STUDENTS:

WIN THE GOLD FOR YOUR GRADE LEVEL

7 VS 8 : GRADE WITH THE HIGHEST ATTENDANCE WINS A POPSICLE PARTY

HIGH SCHOOL: GRADE WITH THE HIGHEST ATTENDANCE WINS A POPSICLE PARTY

[Back to Main Menu](#)

COUNSELOR CONNECTION

Kendy Gonzalez B.S. in Psychology

“The need for connection and community is primal, as fundamental as the need for air, water, and food”

- Dean Ornish



ACT

Ready. Set. ACT!

Whether you're preparing for college, exploring college alternatives, or want to certify your career skills, ACT is here to help you every step of the way!

The ACT Test is Evolving

Free ACT Test Prep

ACT WorkKeys

ACT® WorkKeys® is a system of assessments, curriculum and skills profiling that determine, build, and measure essential workplace skills that can affect your job performance and increase opportunities for career changes and advancement. Developed with the same knowledge and research expertise responsible for the ACT® test, WorkKeys assessments and training help lead individuals and businesses to success.

7 Unique College Majors You Never Knew Existed

Student Blog Guidance for Whatever Future You're After Paying for College

Social Emotional Learning (SEL)

Social Emotional Skills Create Connections and Impact
Recent studies show that social and emotional skills like sustaining effort, getting along with others, maintaining composure, keeping an open mind, and social connection were shown to have a consistent and positive association with students' academic and career success.

27% of students who scored high in sustaining effort met ACT's STEM College Readiness Benchmark.
Students who participate in social emotional skills programming have an 11% gain in achievement test scores.

University information

Rensselaer PolyTech Tour

University of Advancing Technology

NAU virtual tour

U of A virtual tour

GCU virtual tour

University of Texas at El Paso virtual Tour

Colleges of Distinction

Founded on the premise that there are hundreds of remarkable colleges across the United States, each with a unique strength to offer the next generation of college-bound students. We connect these colleges to curious, talented students.

Scholarships

Student Scholarship

Arizona Community Foundation

FLINN Foundation

Click for a list of Full-Ride scholarship list

QuestBridge

connects high-achieving students from low-income backgrounds with a thriving community and transformative educational, career, and life opportunities that help propel them to lives of fulfillment, meaning, and purpose.

Tri-University Scholarship Resources

Contact

☎ 480-813-9537 ex 3150

✉ kendy.gonzalez@eduprizeschools.net

[Back to Main Menu](#)

UNIVERSITY EVENTS



**FRIDAY
NOV 08**
4:00PM - 8:00 PM
VIRTUAL

**SATURDAY
NOV 09**
10:00AM - 2:00 PM
VIRTUAL & IN-PERSON

THE ST. JAMES
6805 Industrial Rd | Springfield, VA 22151

REGISTER ONLINE AT ALFREDSTREET.ORG

Alfred Street Baptist Church invites you to the country's most exciting and largest HBCU Festival!

Top 5 Reasons Students Should Attend The ASBC HBCU Festival:

1. Apply onsite and receive same-day admissions decisions!
2. Several opportunities to receive scholarships!
3. Fun & informative HBCU seminars!
4. Engage with HBCU reps and find out why you should attend an HBCU!
5. It's Free!

Registration opens September 9th!

We look forward to having you join the 2024 HBCU festival!

[Register Here](#)

Get ready
for a
future you
deserve!



Plan



Afford



Apply

Arizona's public universities, Arizona State University, Northern Arizona University and the University of Arizona are committed to keeping students throughout Arizona well informed about the incredible college-going opportunities available to you in your home state. As your in-state universities, we are excited to invite students and guests to a Tri-University Event near you! These sessions are geared toward providing you in-depth information about supports, campus life, how to apply, and finding your fit at an in-state university! Information presented will be the same at each location, so you only need to register for the program that works best for your schedule. We can't wait to host you at one of the following dates:

[Register Here](#)

[Back to Main Menu](#)

SENIORS

CLASS OF 2025

Sept 13, 2024

Senior fee is due

**Pays for: Diploma, Diploma
Cover, Stole and Cords,
Senior Breakfast, Graduation
Expenses**

**For question contact:
dixie.marshall@eduprizeschools.net**

**College Admissions 101:
Keep Calm and Ace Your
Application Process .
Wednesday, September
18, 2024 – 6:00 p.m. CT
Webinar**

**How to Find
Your Path After
High School**

**Your Guide to
Senior Pictures**

**Important Senior
Dates**

2024-2025

L.I.F.E. FUND DUE

LIFE Funds are due September 1st, 2024 in order for students to participate in their class field trips this school year. If you have not already done so, please pay LIFE Funds through you Infinite Campus parent portal.

Lab Instructional Field Experiences (L.I.F.E.) provides special opportunities and presentations on and off campus. We aim to bring the highest quality of experiences, therefore, L.I.F.E. Fund fees are used to cover the cost. Please click on the instructions below on how to pay this fee via your parent portal.

[Directions on how to pay L.I.F.E. Fund](#)

[Infinite Campus Portal](#)

[Directions on how to Review Payment History](#)

[Back to Main Menu](#)

Health Office Updates



IMPORTANT HEALTH OFFICE INFORMATION

As illness or health situations occur throughout the school year, it may be necessary for medication to be administered at school. All prescribed AND over the counter medication (i.e. Tylenol, Ibuprofen, Benadryl, etc.) will need to be checked into the Health Office, along with a [Prescription and Non-prescription Medication Consent](#) form which requires a doctor's signature. These forms can be found on our website www.eduprizeschools.net under the Parent & Student Resources>Health Office Forms, or you can just click on any of the links provided in light blue.

- **HEALTH ACTION PLAN:** Please be aware that children who have asthma, diabetes, or seizures will need an action plan provided by their health care provider, **ALONG** with the signed [Prescription and Non-prescription Medication Consent](#) form .
- **ASTHMA:** If your child has asthma, an asthma action plan will need to be provided by your doctor **ALONG** with a signed [Prescription and Non-prescription Medication Consent](#) form .
- **ALLERGIES:** Allergies that require an EpiPen will need an [Anaphylaxis Management Packet](#) filled out and signed by a doctor along with the [Prescription and Non-prescription Medication Consent](#) form .
- **MEDICATION:** As a reminder, **ALL** medications need to be checked in at the Health Office. Students are not allowed to carry any medication in their backpack unless the parent and Dr have signed a self carry medication consent in addition to the medication consent form. A [Prescription and Non-prescription Medication Consent](#) form will also need to be filled out for any medications, prescription or non prescription.

We cannot accept ANY medications without these forms.

Any questions can be directed to the Health Office staff at (480) 813-9537 option 7

Medication Authorization

If you would like your student to be able to access medication at school, please complete the authorization [FORM](#) and return to the health office.



[Back to Main Menu](#)

NOW HIRING
SUBSTITUTES

We offer:

Competitive pay - \$20.75/hour (teacher certified)
\$19.50/hour (sub certified)
\$17/hour (no certification)

Flexible Schedules - Traditional day and AM/PM TOPS

Range of Classes - Grades PreK-12th grade and specialty classes like dance, PE, computers, and much more.

Incredible Community - Our staff, students, and parents are a welcoming and loving community you will enjoy being apart of.

IF INTERESTED PLEASE EMAIL

emily.yeamen@eduprizeschools.net



COME AND JOIN OUR AIDE STAFF !
LOOKING FOR HARD WORKING PEOPLE WHO LOVE SAFETY AND WORKING WITH KIDS!



TIMES NEEDED ARE:

7:00-8:05 A.M.

10:20 A.M.-1:10 P.M.

2:30-3:40 P.M.

-GREAT FOR STAY AT HOME PARENTS, RETIREES AND COLLEGE STUDENTS OVER 21 YEARS OR OLDER.

- WE ARE VERY FLEXIBLE WITH SCHEDULES.

- FRIENDLY ENVIRONMENT

JOB TYPE: PART-TIME 19HRS A WEEK

IF INTERESTED PLEASE CONTACT:

TYM BRITTON

AIDE SUPERVISOR

CAR LANE COORDINATOR

LUNCH PROGRAM COORDINATOR

EDUPRIZE GILBERT

PHONE: (480) 813-9537 EXT.1270

EMAIL: TYM.BRITTON@EDUPRIZESCHOOLS.NET

Back to Main Menu